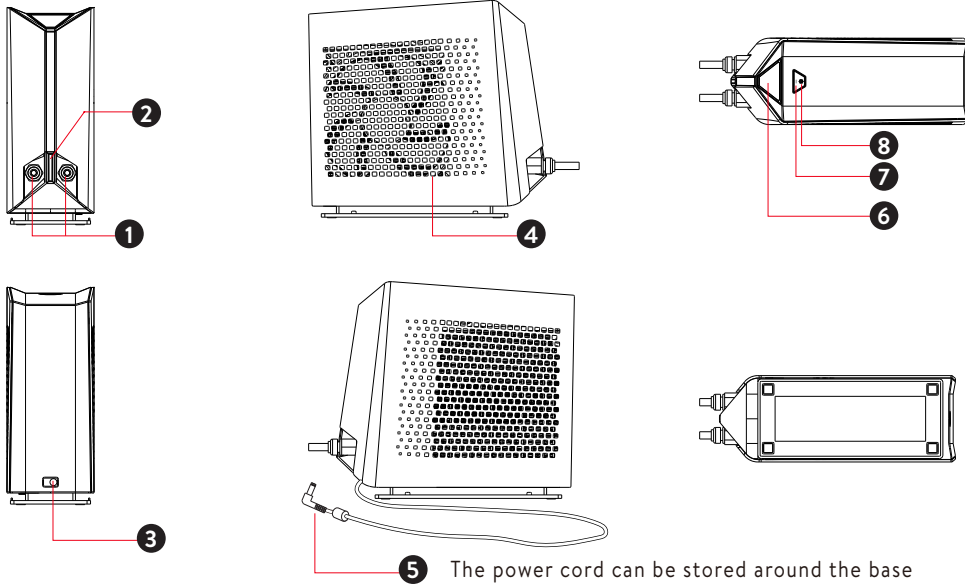


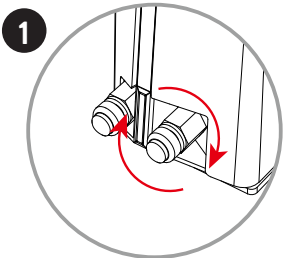
External Features



- 1 Drain Pipes
- 2 RGB LED
- 3 AC Port
- 4 Vents
- 5 Power Connector
- 6 Rubber Lid
- 7 LED Indicator
- 8 Power Button

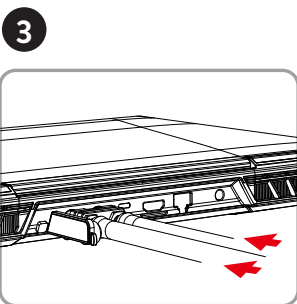
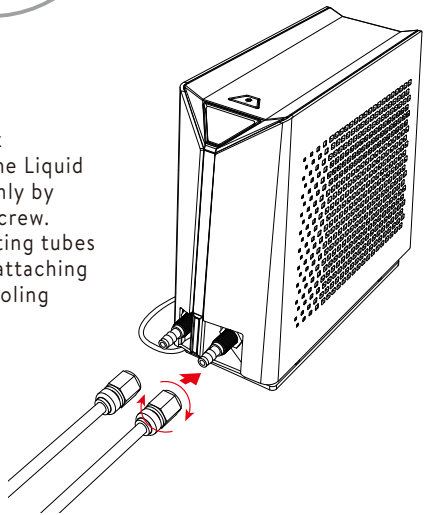
5 The power cord can be stored around the base

Quick Start

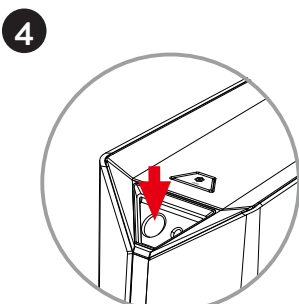


1 Gently remove the Hexagon Water Stoppers by loosening the screw and store aside.

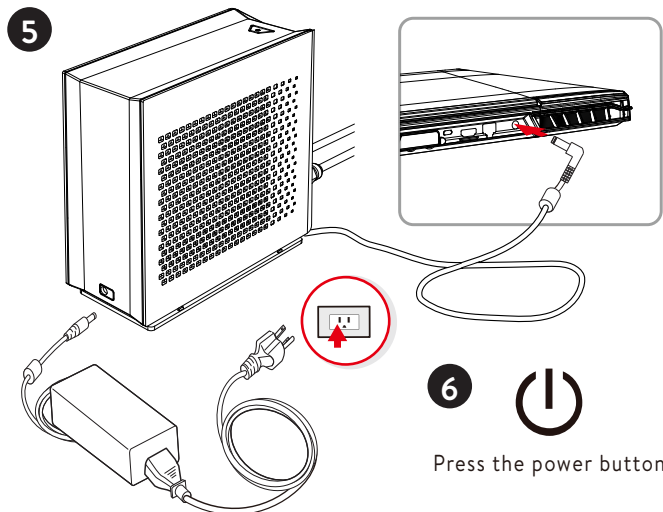
2 Attach the black connectors to the Liquid Cooling Box firmly by tightening the screw. Avoid from twisting tubes while and after attaching to the Liquid Cooling Box.



3 Parallely insert connectors into the laptop.



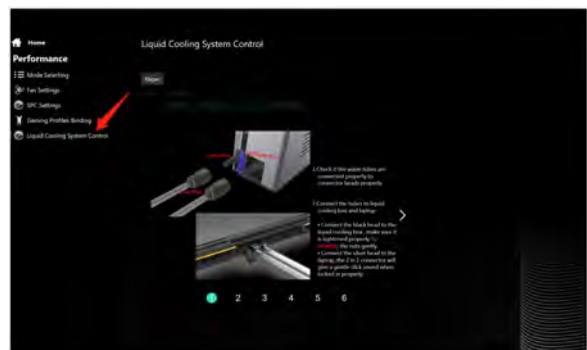
4 Inject water into the Liquid Cooling Box



6  Press the power button

The AC adapter included with your PC was specifically designed and approved for your model. Utilization of an after-market may damage either the notebook or other devices connected to it. If damage is determined to have been caused by utilization of an unauthorized power supply, it will not be protected under warranty.

7 Operate your Liquid Cooling Box



Liquid Cooling Box and laptop will pair automatically via Bluetooth after first pairing:
 a, if both are in Bluetooth distance
 b, laptop has Control Center installed